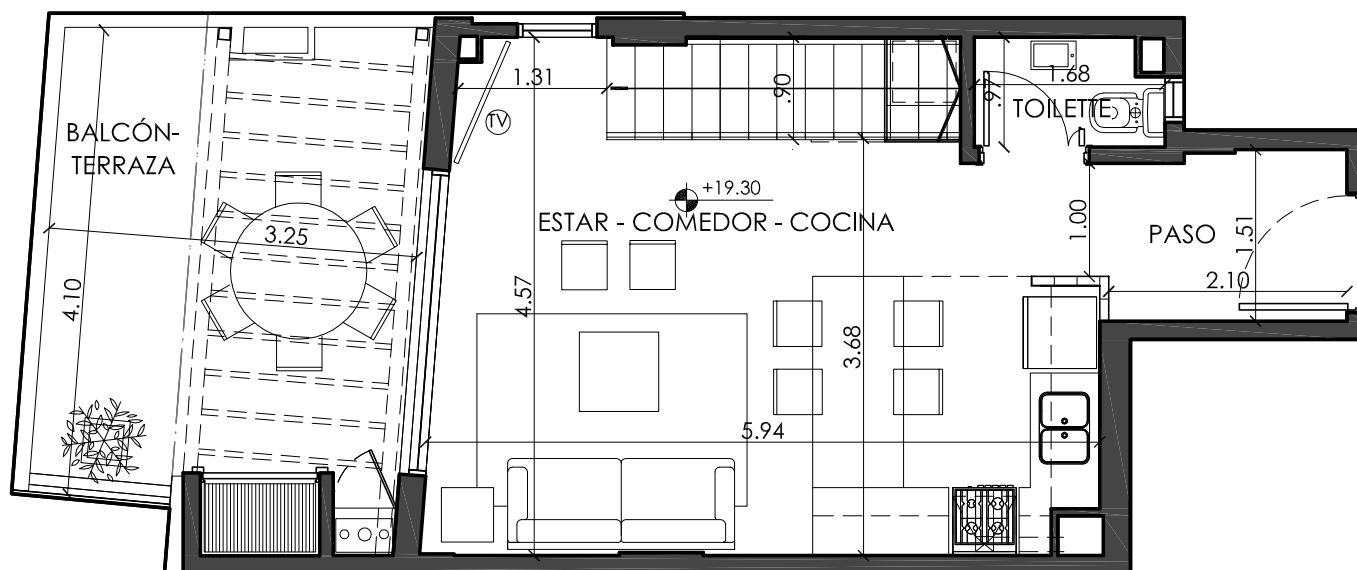


RUY DÍAZ DE GUZMÁN 185 BARRACAS



DPTO 11: 7° PISO FRENTE (DÚPLEX PLANTA BAJA)



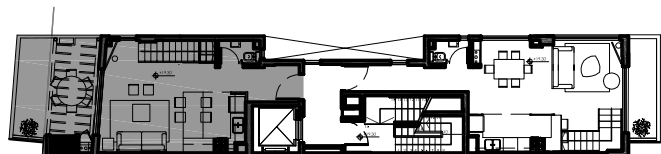
ESC.1:75

TOTAL: 92.89m²

CUBIERTA: 68.48m²

BALCÓN/TERRAZA PB: 15.85m²

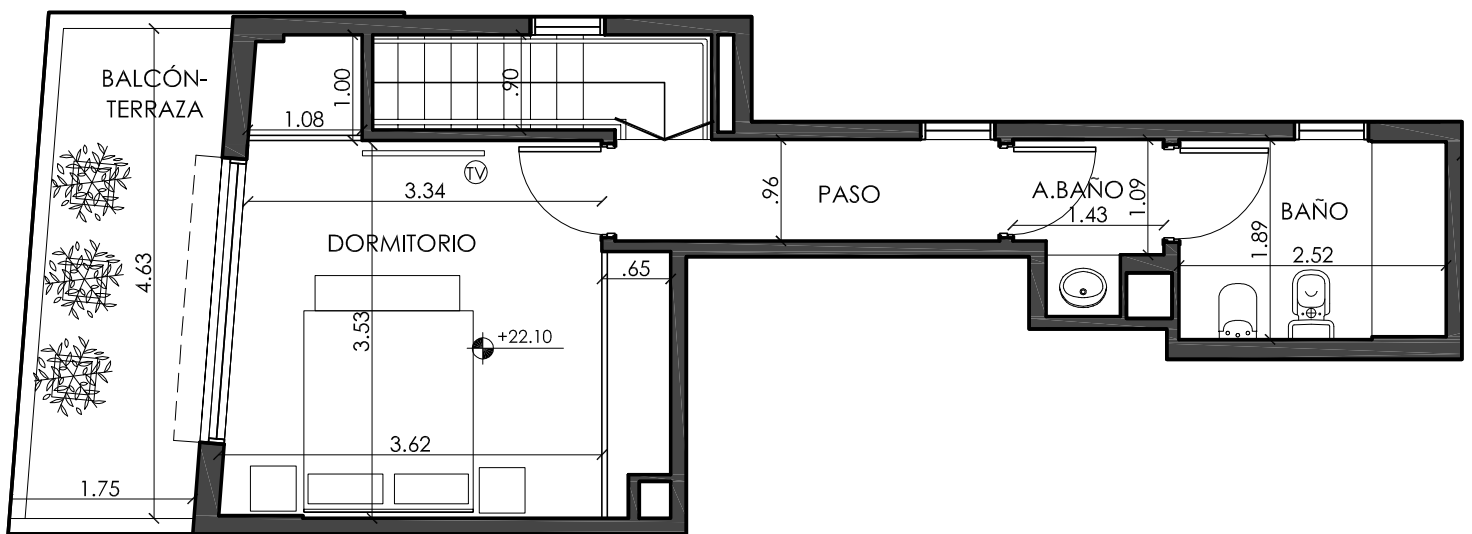
BALCÓN PA: 8.56m²



Dos ambientes con balcones al frente

RUY DÍAZ DE GUZMÁN 185 BARRACAS

DPTO 11: 8° PISO FRENTE (DÚPLEX PLANTA ALTA)



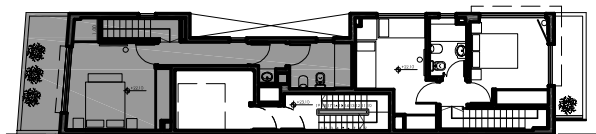
ESC.1:70

TOTAL: 92.89m²

CUBIERTA: 68.48m²

BALCÓN/TERRAZA PB: 15.85m²

BALCÓN PA: 8.56m²



Dos ambientes con balcones al frente